



# Alachua County Fire Rescue

Citizens Academy  
2018

William Northcutt, Chief  
Harold Theus, Deputy Chief

*Where Nature and  
Culture Meet*



# The Department

## Chief William Northcutt



### **Operations**

Field Operations

(Deputy Chief Harold Theus)

Emergency Medical Services / Peak Load Division

(Assistant Chief Jeff Taylor)

Technical Services/Training

Fire Prevention

( Assistant Chief Larry Stewart)

### **Finance & Administration**

(Cheryl Ellis)

General Accounting

Ambulance Billing

Information Technology

### **Emergency Management**

(John Shaw)

### **Enhanced 911/Communications**

(Keith Godwin)

# Mission Statement



***Public servants dedicated to enhancing and caring for the lives of those in our community through preparedness and an immediate response to any and all of life's emergencies.***



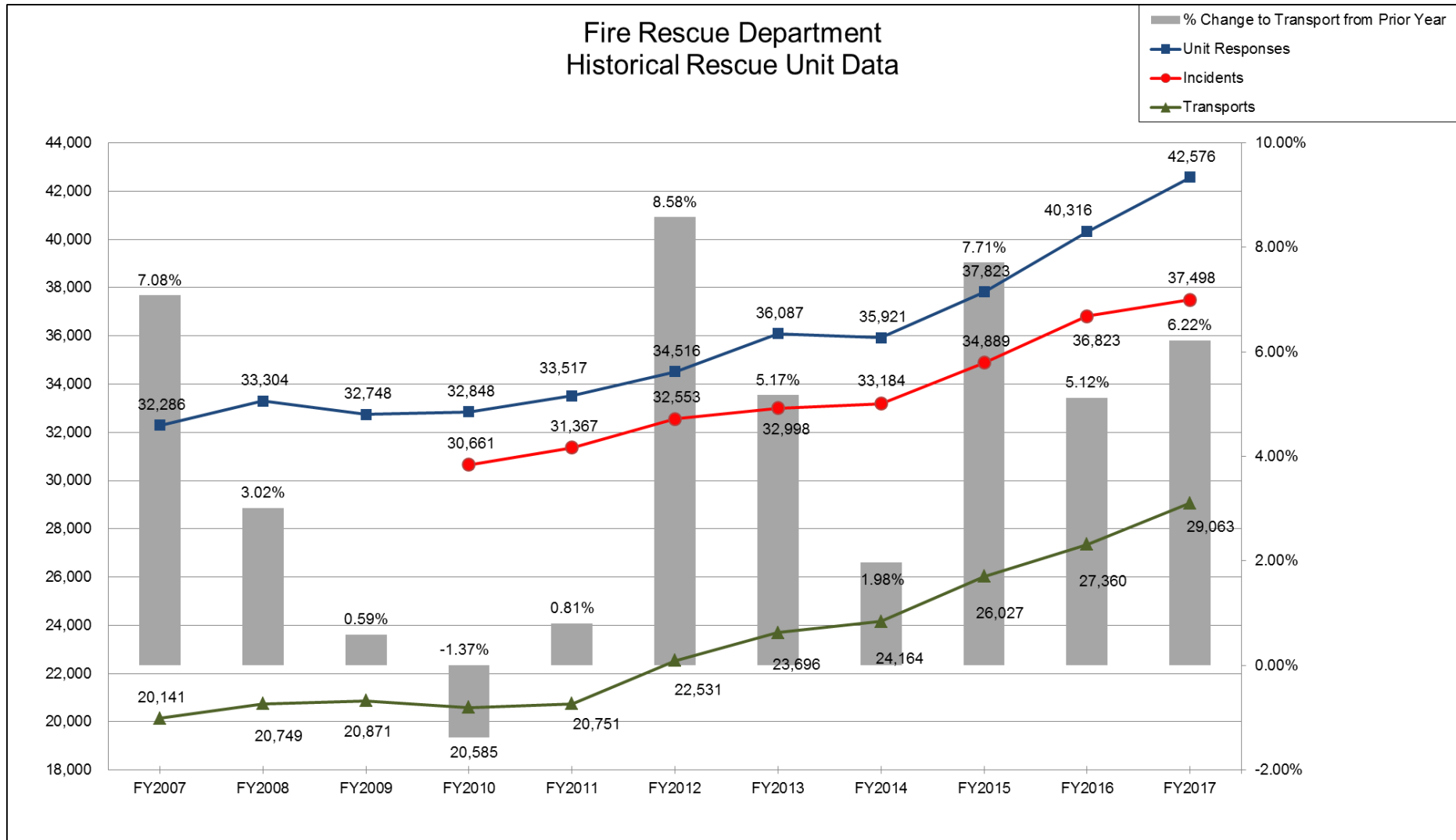
## History of Alachua County Fire Rescue

The history of Emergency Services in Alachua County started with the desire of a few early pioneers to improve their community. Area funeral homes, like other communities across the nation found an outlet for helping those in need before they required their professional services. In the late 1960's a white paper was published which highlighted that there was a much greater chance of surviving a combat wound in Vietnam than a car accident in the United States. This paper would awaken the American Public's interest in Pre-Hospital care and the direct creation of the first Paramedics. Alachua County Emergency Services was created to address the issue of new technologies, skills of these first Paramedics and the need to provide a consistent level of care. Over the years the department has continued to advance with the addition of services but the basic premise of helping people remains the same.

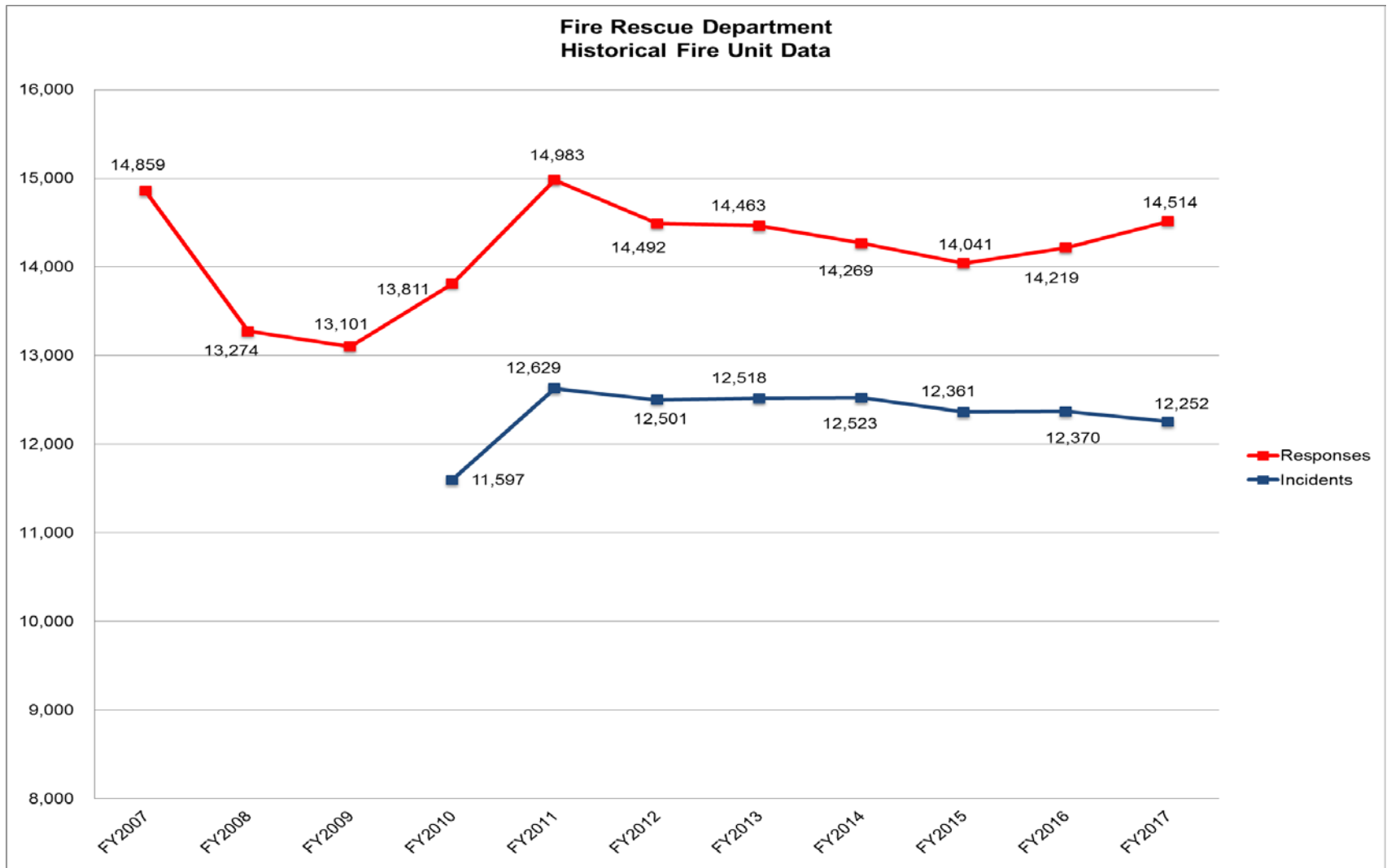


# Rescue Unit

## Historical Data



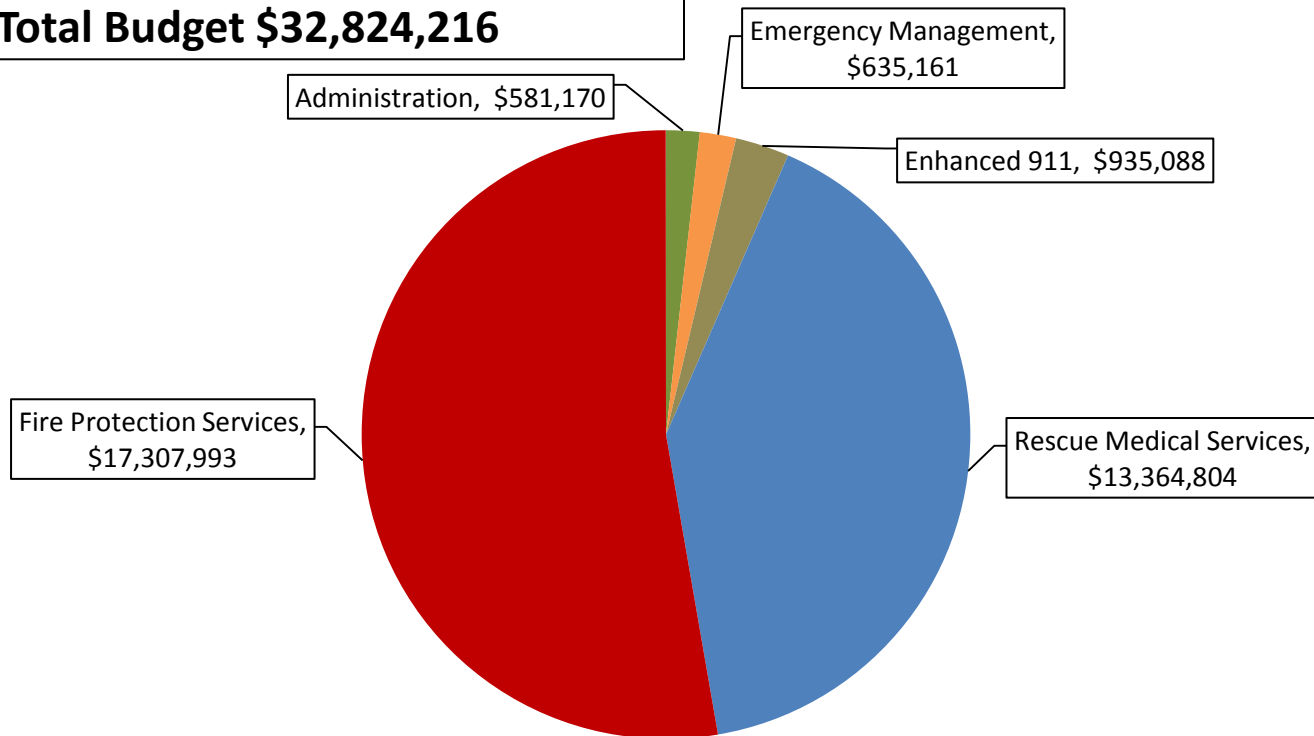
# Fire Unit Historical Data



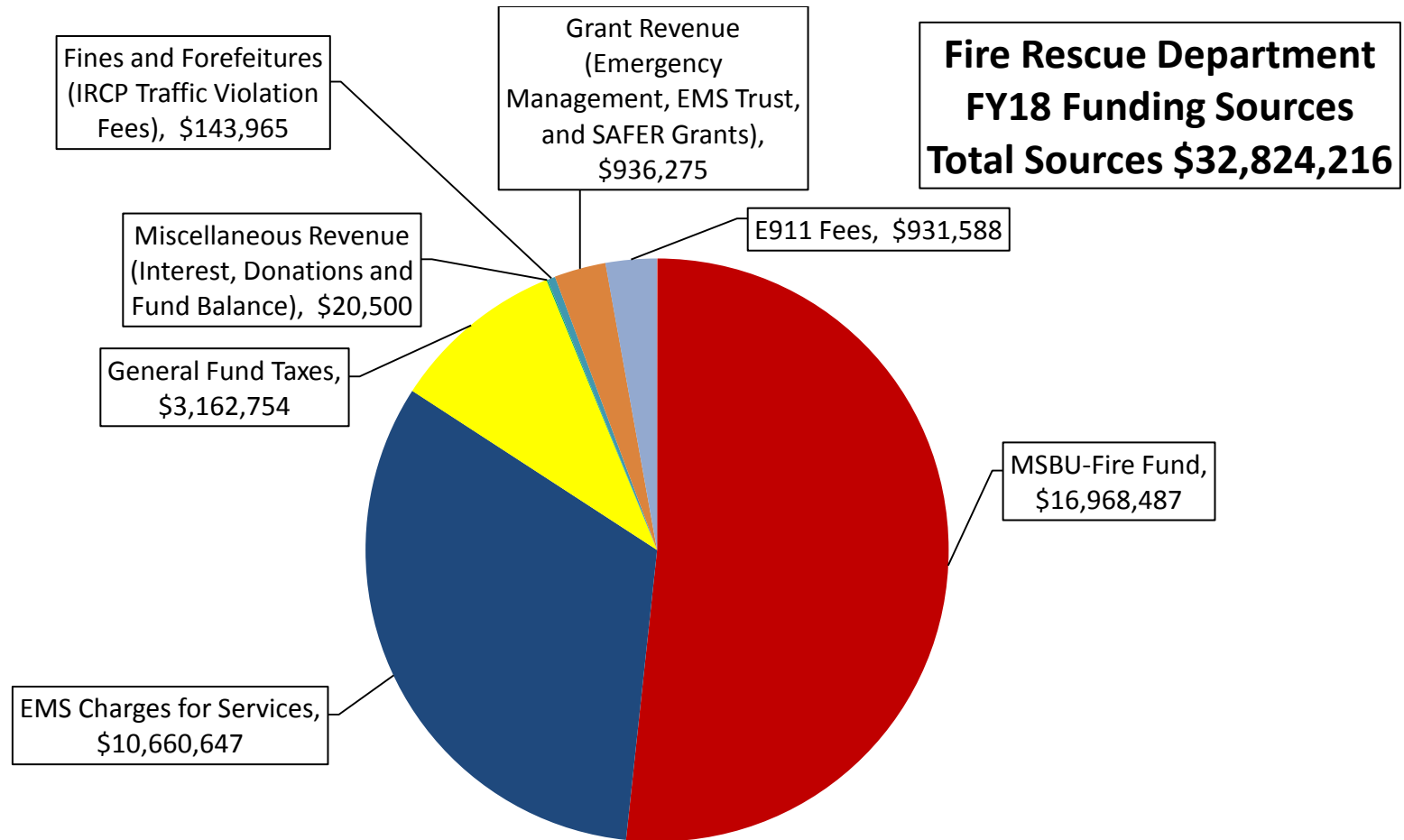
# FY18 Operating Budget



**Fire Rescue Department  
FY18 Adopted Operating Budget by Section  
Total Budget \$32,824,216**



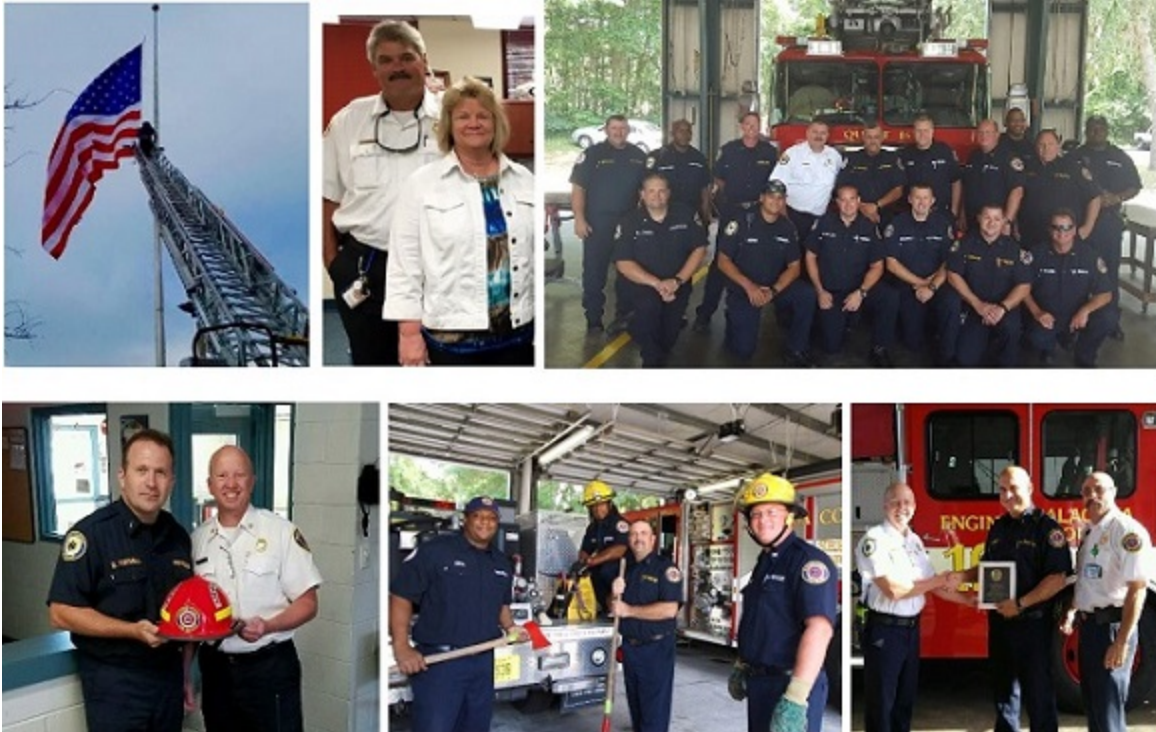
# FY18 Funding Sources





# Our People Are The Reason Our Department is What it is Today.

- The department has 266 uniformed personnel
- Total strength for the department is 280 personnel
- Alachua County operates out of 13 stations
- We also operate out of two additional stations through allied agency partnerships.



# Alachua County Fire Rescue Stations

Alachua County Fire Rescue Operates out of 13 stations in the 962 square miles that make up Alachua County. We have a mixture of stand-alone Rescue Stations, stand-alone Fire Suppression Stations and Multi-Company Stations.

Other facilities operated by the Department are:

- Administrative Office (Headquarters)
- Central Supply Warehouse
- Training Facility located at Lofton High School.





# Station 33

Alachua County Fire Rescue Station 33 is located at 5901 NW 34<sup>th</sup> Blvd. in Gainesville Florida. Station 33 houses Rescue 33 which is a two person Advanced Life Support transport. This unit's primary response area is located along the northern urban area of the City of Gainesville. Rescue 33 is crewed by two personnel, a Rescue Lieutenant and a Firefighter.

This station also houses all of our Critical Care Peak Load Units (CC1 –CC5).



Alachua County Fire Rescue Station 33 is located at 5901 NW 34 Blvd Gainesville, FL. Station 33 houses Rescue 33 which is an advanced life support transport. Station 33 is also the home base for the department's Critical Care Division.





# Station 81

Alachua County Fire Rescue Station 81 is located at 8800 SW Archer Rd. Gainesville Florida. Station 81 houses the following units:

- **Rescue 81** a two person Advanced Life Support Transport
- **Engine 81** a three person Advanced Life Support Engine Company
- **Brush 81** a cross staffed type 6 brush truck.

The primary response area for Station 81 includes the Southwestern side of Alachua County from west of the Interstate through the heavily developed Archer and Tower Road corridors.





# Station 40

Alachua County Fire Rescue Station 23 is located at 1600 Fort Clarke Blvd. Gainesville Fl. Station 23 houses a number of units.

- **Rescue 23** is a two person Advanced Life Support Transport. It is the second of the department's Bariatric equipped vehicles.
- **Quint 23** is a three person Advanced Life Support Aerial Quint. Quint 23 is a 2009 E-One equipped with a 75' ladder.
- **Squad 23** is a three person Advanced Life Support heavy squad. This vehicle is an E-one Typhoon. Squad 23 carries heavy extrication, and has the ability to provide scene lighting and air bottle cascade system operation.
- **District 6** is the Westside Command Officer.





# Station 24

Alachua County Fire Station 24 is located at 3509 NW 143 St. Gainesville Florida. Station 24 houses multiple units.

- **Rescue 24** is a two person Advanced Life Support Transport.
- **Engine 24** is a three person Advanced life support Engine company.
- **Brush 24** is a cross staffed type 6 brush truck.
- **MSU 24** is a cross staffed Medical Ambulance Bus. This vehicle was purchased through a Federal Grant and is one of only three of the type in the State of Florida. This unit is capable of transporting up to 20 stretcher bound patients or 24 seated patients at a time. It is a very unique vehicle in the fire service. Other missions include rehabilitation for crews engaged in long term operations and special event coverage.



# Operations

## Critical Care Division

- The need for Critical Care Transportation is an increasing demand on local services.
- Currently ACFR operates 5 Critical Care Transports on staggered schedules. Plans include expanding the division in the near future.
- Critical Care Division Apparatus are staffed with a minimum of 1 Critical Care Certified Paramedic and 1 driver (EMT or Paramedic).
- Units are not part of front line fire suppression.
- Units carry unique invasive equipment in order to meet the high acuity level of the patient care requirements.





# So what does it mean to be a Firefighter for Alachua County Fire Rescue?

## Service

- Opportunity to make a difference in your community
- Helping people equally from the homeless to the millionaire
- Changing lives in both large dramatic events and small simple details
- More than just co-workers. We are a family
- Understanding that personal service is the cornerstone of Emergency Services
- Seek people who have a passion for serving others



This photo used with patient's permission



# What kind of things are expected of a firefighter?

The position of firefighter has many different expectations. New firefighters are responsible for many tasks, and functions. Some of these tasks include:

- Service to our community
- Preparation
- Patient care
- Training
- Fire Suppression

The position of firefighter in Alachua County is a demanding one. Dedication to self improvement, hard work and a core value of compassion and helping others is the expectation of the position.





# Patient Care

- The majority of services rendered by Alachua County Fire Rescue are Emergency Medical Services.
- Greatest impact to our community by the interactions we have with our patients.
- Expectation of all personnel is that you take care of the people in our community as you would a loved one.
- Customer Service and a genuine desire to help people are common attributes we expect from our firefighters.





# Operations

## EMS Division

Alachua County Fire Rescue represents the diverse and vibrant community in which we operate.

- We operate 12 (24/7) ALS transports.
- Transports are staffed with a minimum of one Rescue Lieutenant (Paramedic) and one firefighter (EMT or Paramedic)
- Alachua County Fire Rescue has a Certificate of Public Convenience and Necessity (COPCN) for Alachua County.
- ShandsCair does have an ability under this provision to provide inter-facility transportation.
- In FY' 17 ACFR received over 40,000 requests for service.
- Greater than 90% of these requests were for medical services.
- EMS crews are fire certified, carry their own air packs, gear and are expected to operate as fire suppression crews at fires.



# Operations

## Fire Suppression

Alachua County Fire Rescue provides direct fire suppression services to county residents in the unincorporated county and the municipalities of Alachua, Archer, Hawthorne and Waldo.

- ACFR operates 8 ALS Engine Companies, 1 ALS Quint, 1 ALS Heavy Squad. In addition, the department operates multiple cross staffed vehicles. ( Brush trucks, tankers etc.)
- Minimum staffing of fire apparatus is three personnel. This includes a Lieutenant, a Driver Operator and a Firefighter.
- Extrication services are provided by multiple apparatus with Squad 23 providing heavy extrication whiles Engines 21, 40, 60, 62, and 82 also carry heavy hydraulics.





# Apparatus

## Rescues

Alachua County Fire Rescue Operates three primary types of Rescue units. Frontline transports are primarily Road Warrior style vehicles, the department is transitioning back to Type one apparatus. The Critical Care division's apparatus have additional features such as on board generators to allow them to meet the requirements of their unique mission.





# Apparatus

## Fire Apparatus

Alachua County Fire Rescue operates several different styles of apparatus. The current standard we utilize for our front line apparatus is an E-One, Cyclone chassis. Standard Engines operate with 750 gallons of water on an internal tank and a two stage, 1500 GPM. pump. Hose compliments are dependent of apparatus placement.



# Emergency Management



- As a function of government, Emergency Management is the County's system for dealing with complex disasters.
- The system is a collaborative effort across county departments as well as with Community Partner agencies that facilitate mitigation, preparedness, response, and recovery activities.
- The end goal of Emergency Management is to build a Disaster Resilient Community, an element that lends itself to the overall Sustainability of the County.

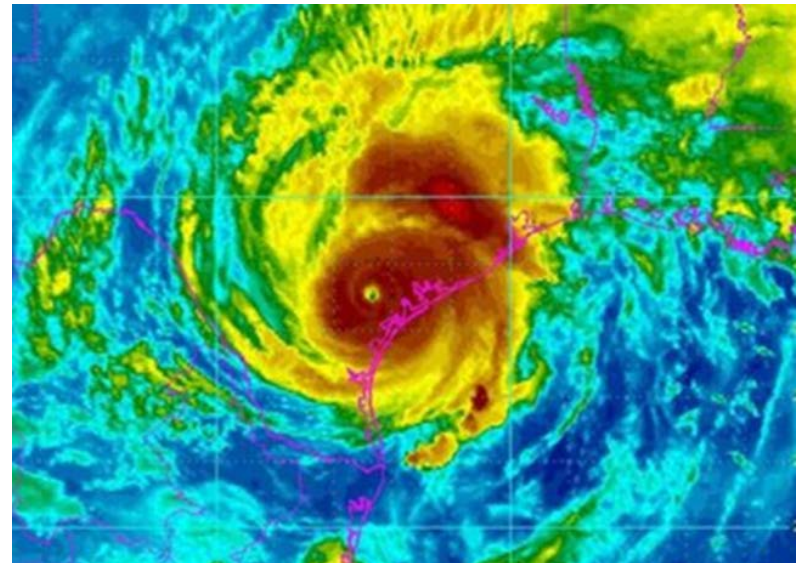
## FY2017

Total staff 4

# CERT Classes 0

# ERT Agency exercises 3

# Activations 1



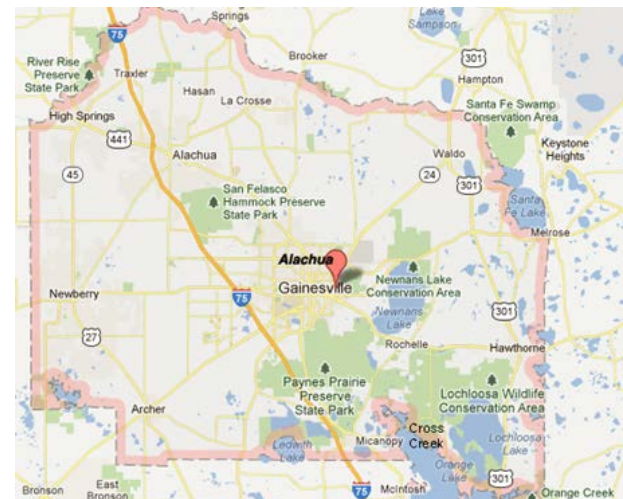


# Enhanced 911/Communications



- Enhanced 911 (E911) is a system that provides a 911 call-taker with the address of the caller (for landline calls) or geographic coordinates (for wireless calls).
- To facilitate this, the E911 Office procures and maintains E911 hardware/software systems used by 911 call-takers and administers.
- Accurate data ensures that the address that appears with the telephone number is the address of the caller and allows for the quick and accurate dispatch of emergency responders

Total staff 6



# Finance & Administration



- The Administration section provides high quality support and logistical services to field personnel and other county agencies. The Section consists of the General Accounting Branch, the Revenue and Collections Branch, and the Information and Technology Office.
- **The General Accounting Branch** is responsible for the annual budget development, purchasing functions, expenditure monitoring, grant & contract coordination and administration, accounts payable and payroll functions, and personnel coordination.
- **The Revenue and Collections Branch** is responsible for the administration of the department fee schedule. In April 2015, this branch took over the billing process for Bradford County EMS
- **The Information and Technology Office** is responsible for technical support of all hardware and software programs within the department.

## Total Staff

General Accounting	- 5
Revenue & Collections	- 9
Information & Technology	- 2



# The Future



- There are a number of opportunities for both the department and it's personnel moving forward into the future.
- The community is growing and along with this growth comes an increase demand for emergency services.
- The department strives to enhancing and caring for the lives of those in our community through preparedness and an immediate response to any and all of life's emergencies.



# Questions?



# CONTACT INFORMATION



<http://www.alachuacounty.us/Depts/PublicSafety/Pages/fr.aspx>

352-384-3101

Dial 911 in an emergency

<https://www.facebook.com/pages/Alachua-County-Fire-Rescue/121243407933955>